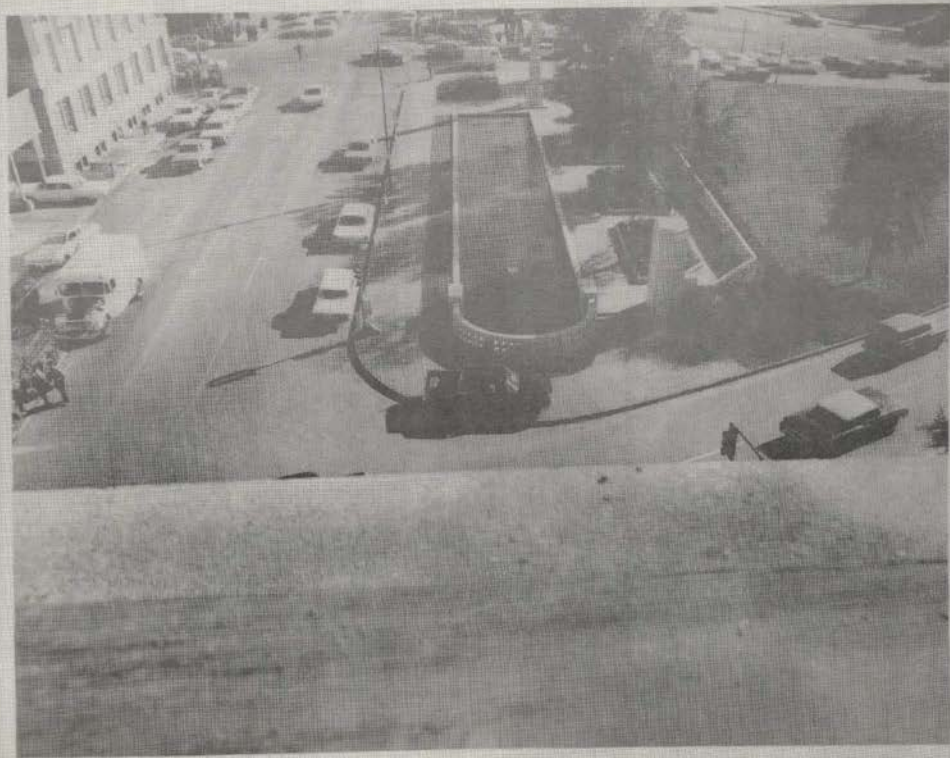


Photographs (5)

PHOTOGRAPHS
EXTERIOR AND INTERIOR
OF
TEXAS DEPOSITORY BLDG.
RECONSTRUCTION

9

6-11-54
VIEW FROM AIRBORNE WHITE PHOTO TAKEN AT 10:15 AM ON 6-11-54. SUBJECTS: AIRBORNE PHOTO



FROM ELM STREET UNDERPASS TOWARDS 411 ELM



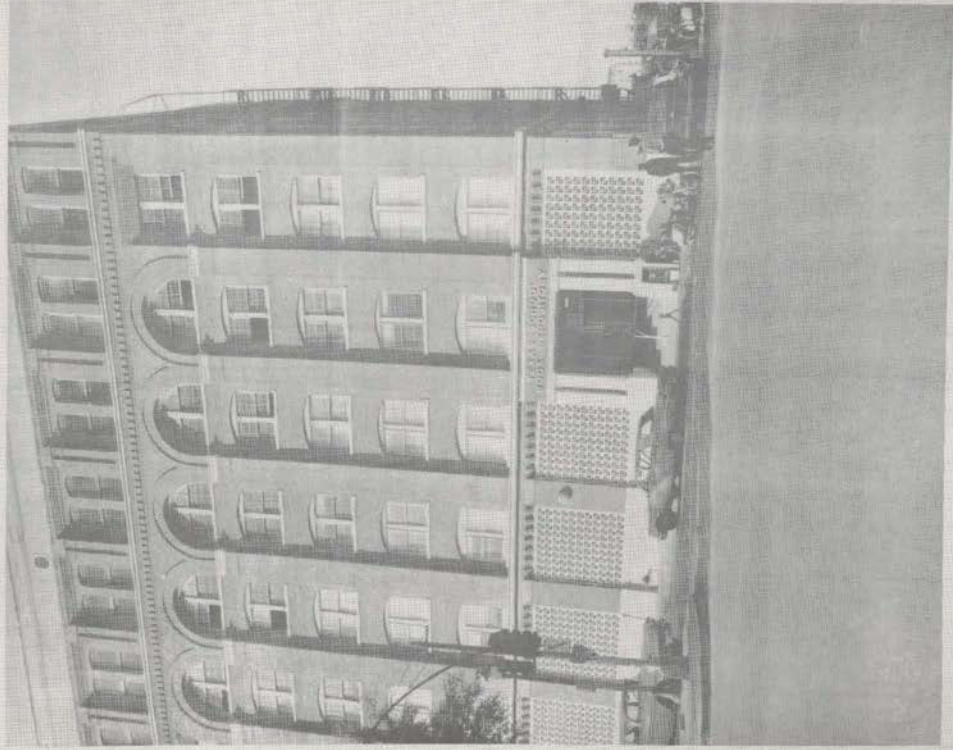
FROM TRIPLE UNDERPASS TO BLOC, 411 ELM



FROM MAIN AND HOUSTON TO 411. ELM



FROM ELM AND HOUSTON TO 411 ELM



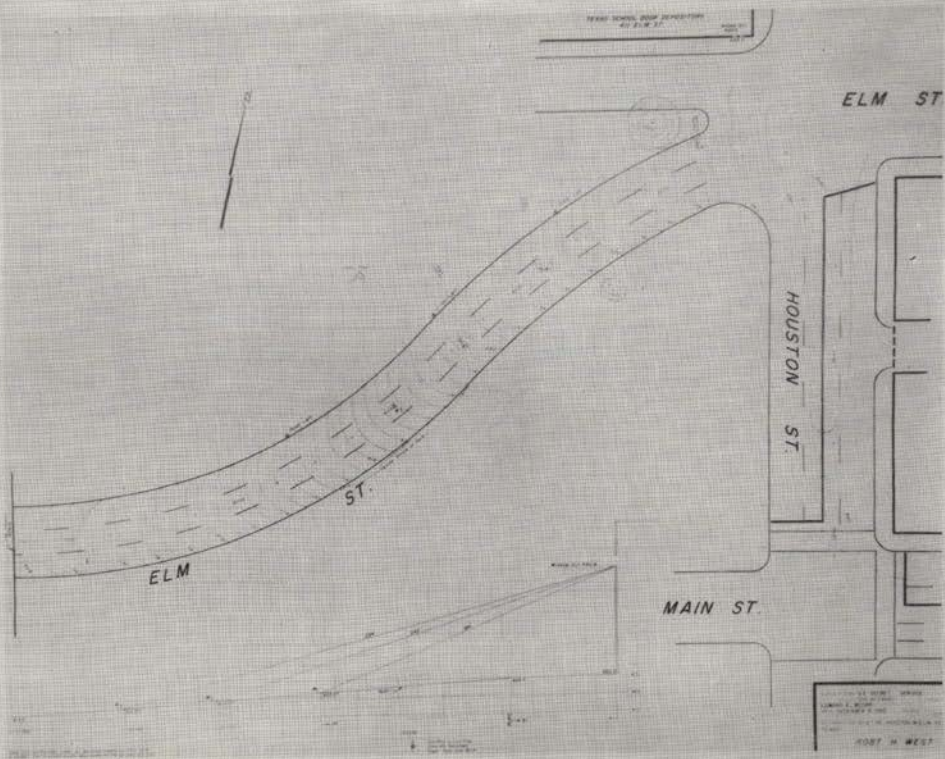
8th FLOOR 411 ELM
LOOKING OUT WINDOW 5th FLOOR WHERE SHOTS WERE FIRED
TOWARD ILM STREET AND TRIPLE UNDERPASS.



RECONSTRUCTED BY USCS
147, SHOT



TRAJECTORY OF BULLETS
FROM WINDOW TO STREET



NEAR POINT OF IMPACT
AT 21.8 M ST

ELM ST

HOUSTON ST

MAIN ST

MORT H. WEST

RECONSTRUCTION USSS VIEW OF CAR
2 AND 3 SHOTS



RECONSTRUCTION 11-27-61 2 and 3 SHOTS



2nd FLOOR
FROM STAIRWAY TO 1st. FLOOR TO DOOR LEADING TO LUNCHEON ROOM



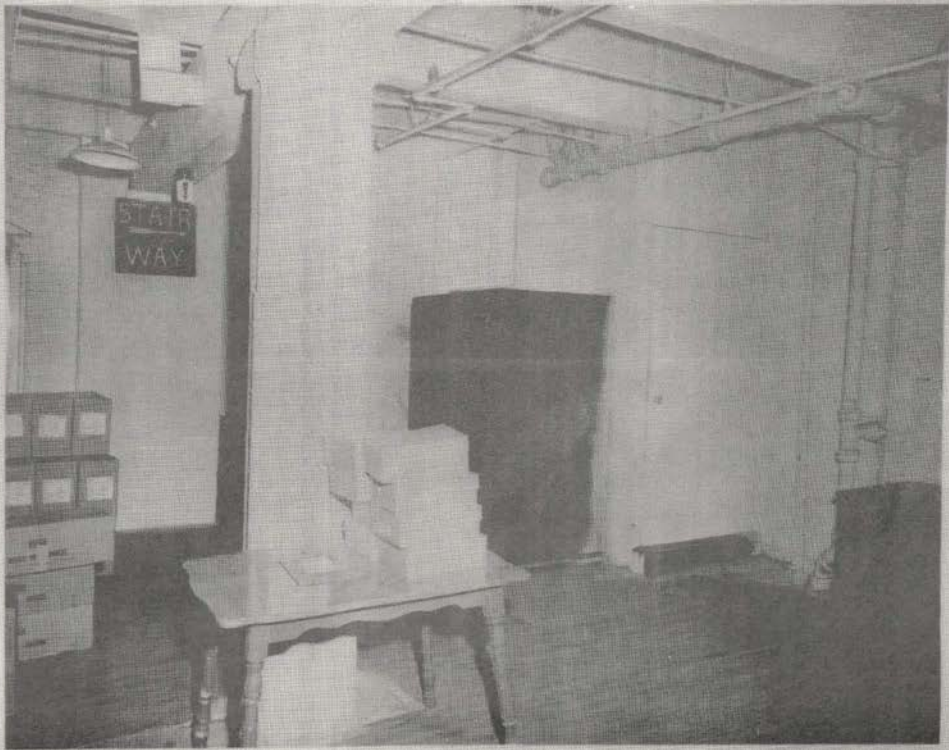
2nd FLOOR 411 ELM
FROM DOORWAY LOOKING INTO LUNCHROOM



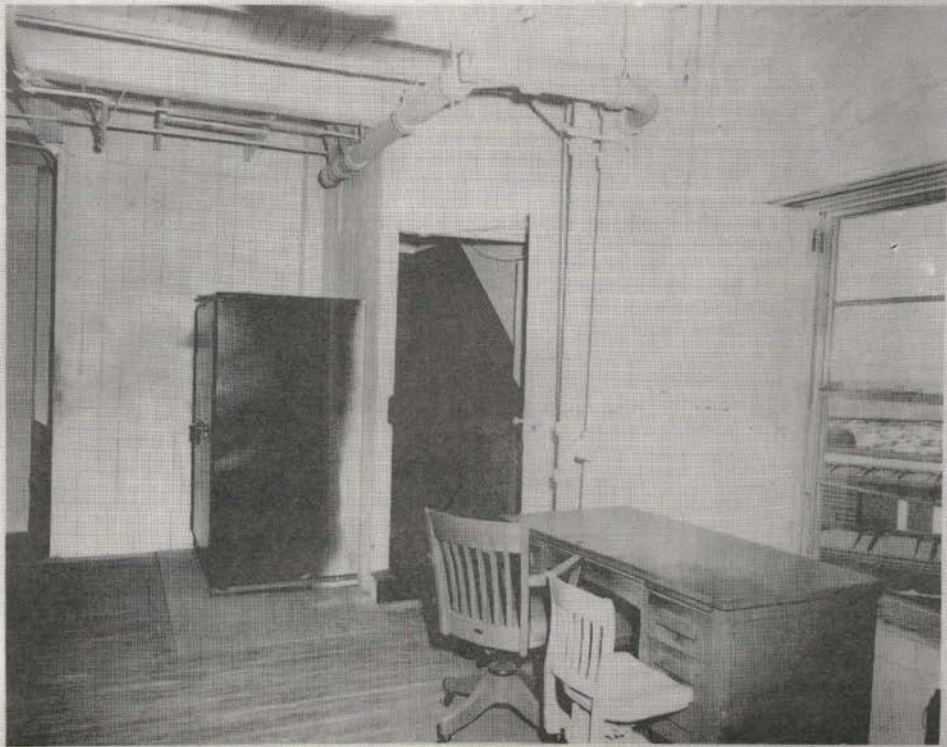
2nd FLOOR 411 ELM
IRVINE BARRACKS LOOKING TOWARDS DOOR LEADING TO STAIRWAY



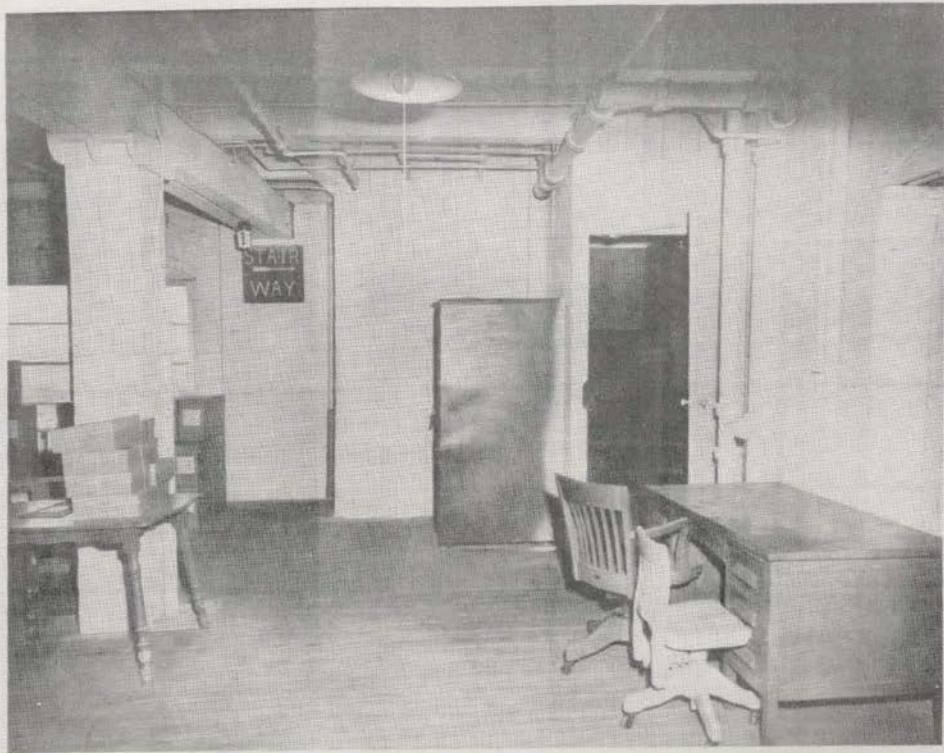
2nd FLOOR
FROM DOOR OF LUNCHROOM TO STAIRS
LEADING TO 3rd FLOOR. DOOR CLOSED



2nd FLOOR FROM ELEVATOR TO DOOR
WHERE STAIRS LEADING TO 3rd FLOOR



2nd FLOOR
VIEW INSIDE ELEVATOR TO DOOR
WHERE STAIRS LEADING TO 3rd FLOOR



6th FLOOR
POSITION OF BOXES



6th FLOOR 411 ELM
POSITION OF BOXES



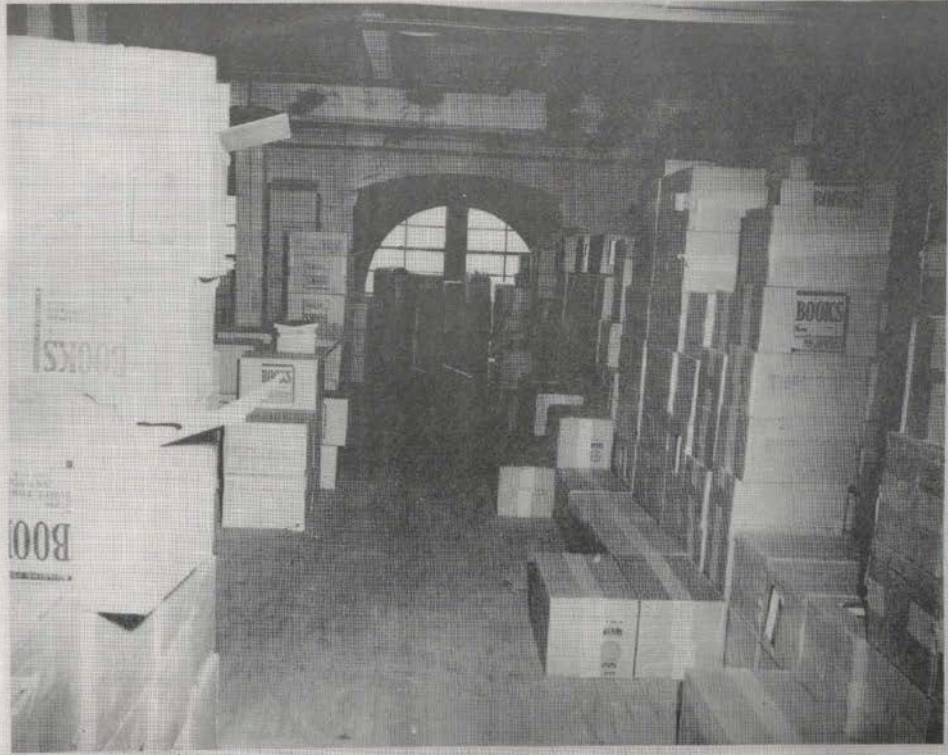
655 11009
MURDER SUSPECT JOHN STANLEY ROBERTS
SHOPS IN HOLLISTON



8th FLOOR 411 ELM
TAKES 25 FEET NORTH OF WINDOW MILK SHOTS WERE TAKEN



THESE ARE AT NORTH STATION
AND WILL BE TAKEN TO THE
STREET CAR STATION
WITH THE BOOKS.



8th FLOOR 411 ELM
TAKEN 40 FEET FROM WINDOW WHERE SHOTS WERE FIRED



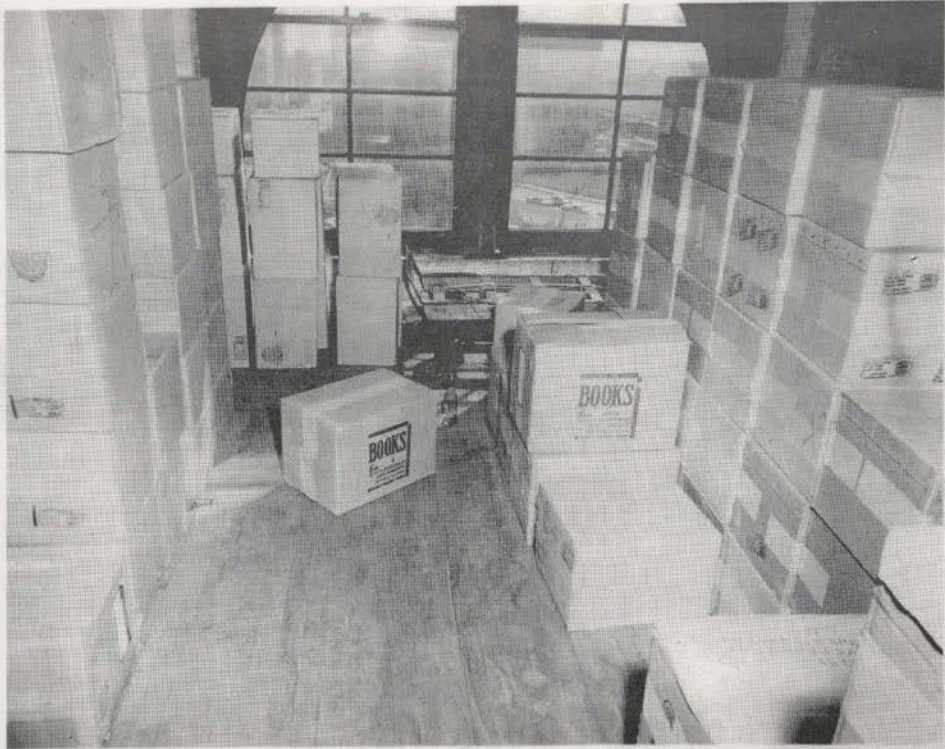
TAKEN 45 FT. NORTH OF WINDOW WHERE SHOTS WERE FIRED



6th FLOOR-411 ELM
TASKE IN 3rd AISLE FROM HOUSTON LOOKING WEST
NO SIGNIFICANCE



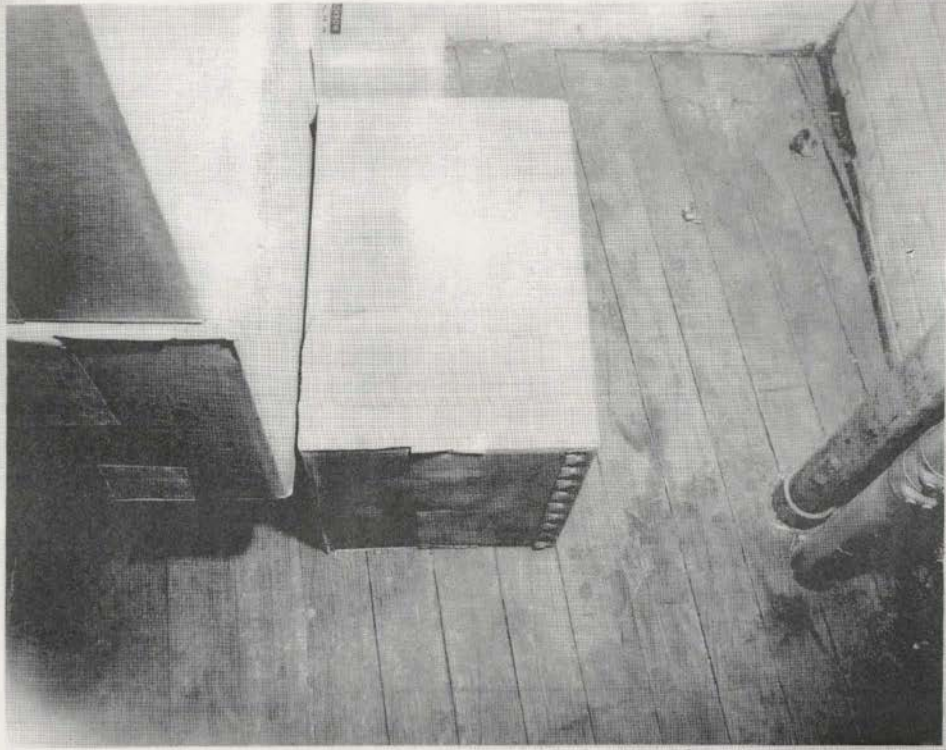
6th FLOOR 411 ELM
TAKEN 25 FEET NORTH OF FRONT OF BLDG.
IN 3rd AISLE FROM HOUSTON LOOKING SOUTH
NO SIGNIFICANCE



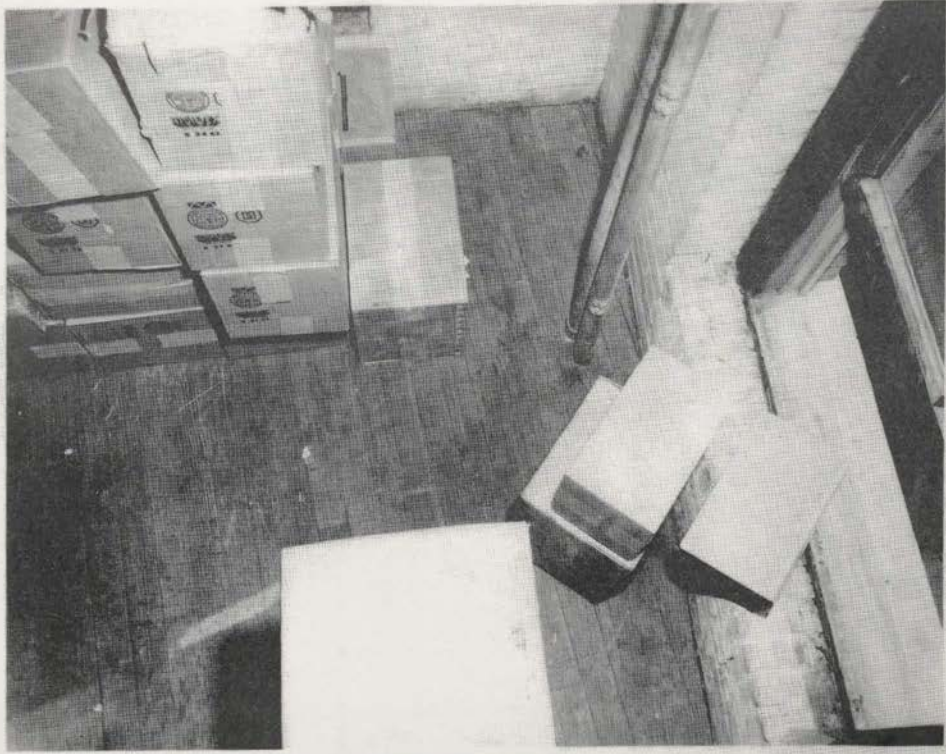
6EP FLOOR 411 81M
TAKEN AS FILM FROM FRONT WINDOWS ON FILM STRIP
3RD AISLE FROM HOUSTON, NO SIGNIFICANCE



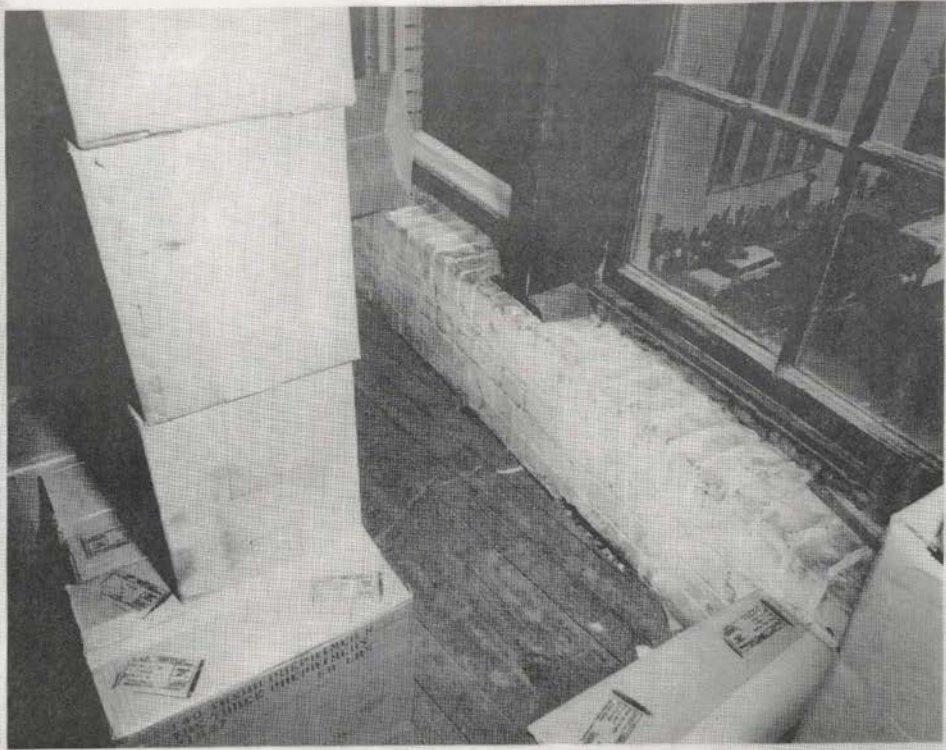
6TH FLOOR
YALE PRINT FOUND ON BOX
MAN STAFFER FOUND TO RIGHT OF BOX



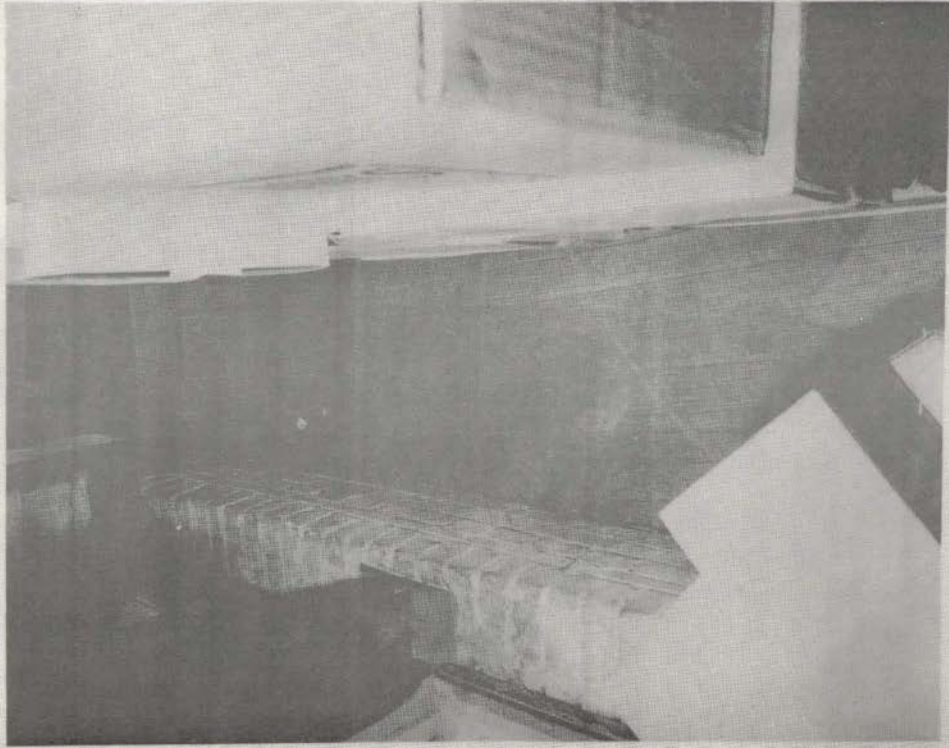
6TH FLOOR
PAPER THAT CAN WAS STRIPPED IN ROOM IN CORNER



6th FLOOR 411 ELY
TAKEN TOWARDS WINDOW WHERE SHOTS WERE FIRED
SOLES USED FOR OUR REST IN MORGON
EMPTY BILLS IN FLOOR. LOOKING SOUTH EAST



4th FLOOR 411 BLDG
TAKEN BY MIDSON. HERE SHOTS WERE FIRED
BOXES USED FOR OUR REST AND 3 EMPTY BULLETS

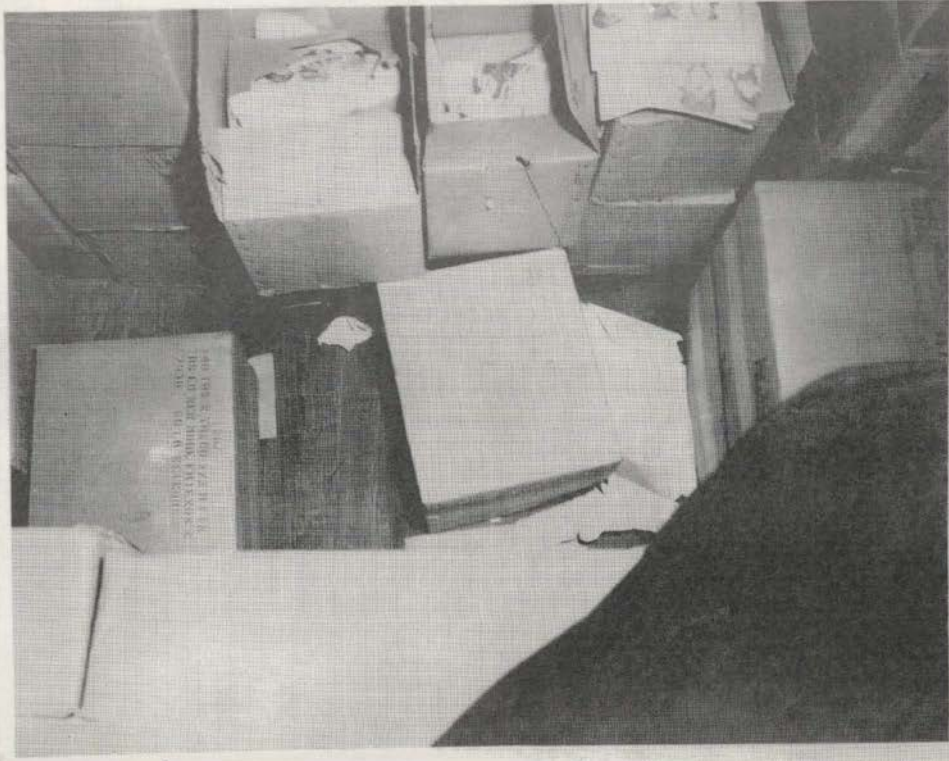


8th FLOOR 411 PM
TAKEN BY WINDON WHEBE SHOTT FIRED
LOOKING TOWARDS EMPTY HILLS ON FLOOR



NO. 22

6th FLOOR 911 ELM
TANKS IN 7th AISLE FROM HOUSTON STREET,
5 FEET EAST OF THE WEST SIDE OF THE BLDG., LOOKING TOWARDS CURB

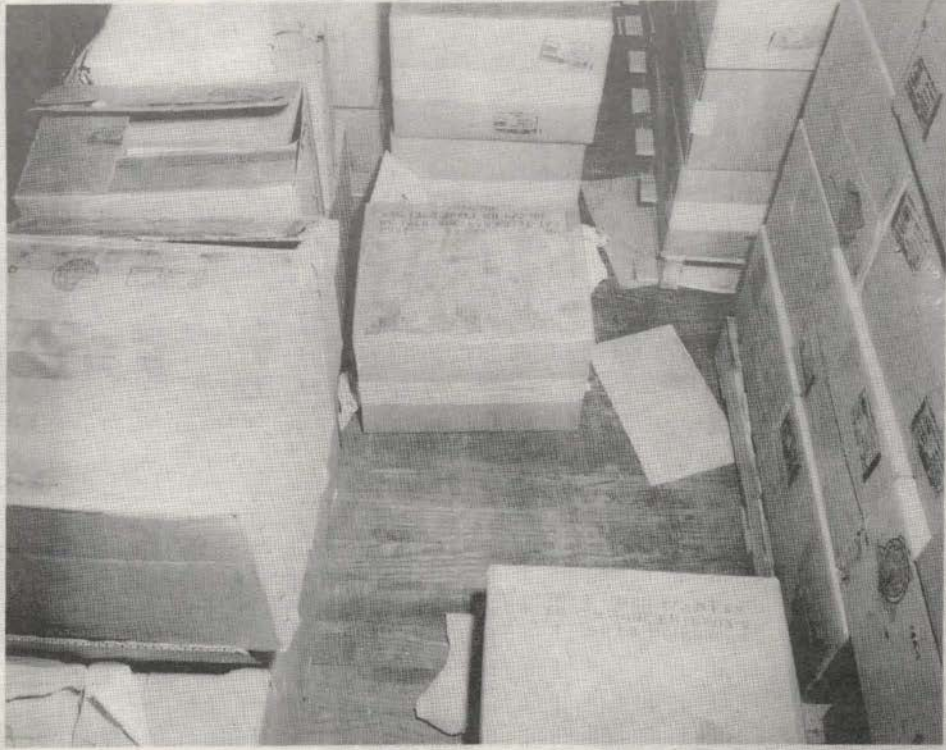


HOUSTON, TEXAS, 1916
S. 245X144 300X 200 100
M. 1 1/2 7/8 10/16 3 3/4 1 1/4

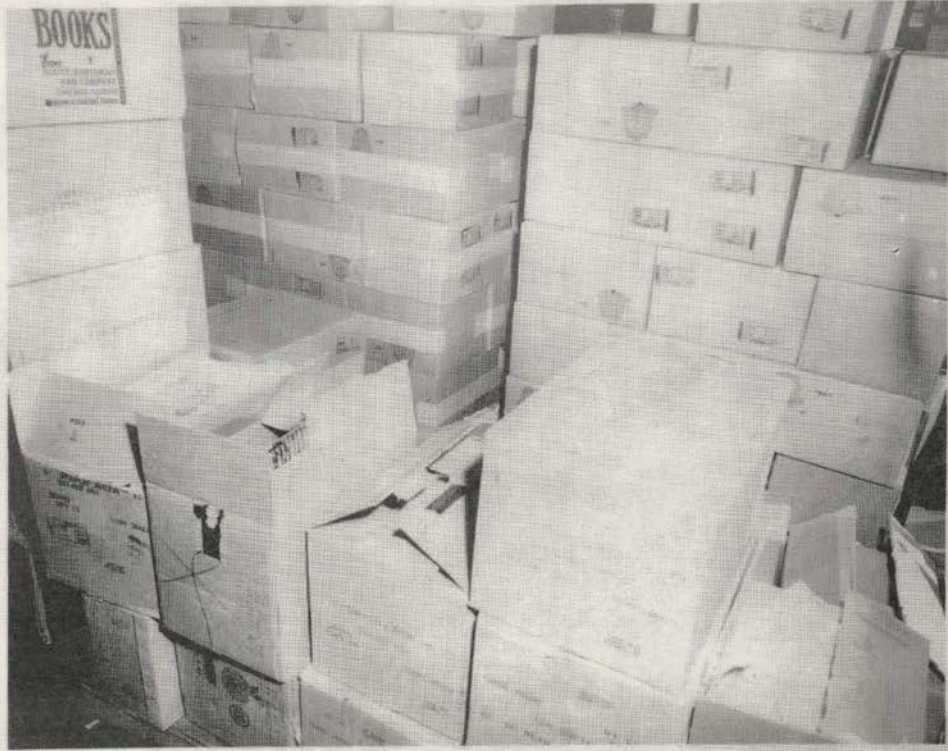
8th FLOOR 311 11A
DUPLICATE SHOTS OF PICTURE # 13



6th FLOOR, ALL DIM
CASES FROM WEST WALL OF HALL,
LOOKING TOWARDS BOXES WHERE GUN WAS FOUND



6th FLOOR 411 ELM
GUN TOWER BEHIND BOXES THAT ARE TAPED
TAKEN LOOKING SOUTH IN THE 7th AISLE NEAR STAIRWAY LEADING TO 5th FLOOR



6th FLOOR - 411 ELM
LOOKING DOWN STAIRWAY TO FIFTH FLOOR



5th FLOOR 433 FLM
LOOKING DOWN STAIRWAY TO 4th FLOOR
COW FOUND LOWER RIGHT CORNER OF PICTURE



845 T. 1008-411 ELM
FROM STAIRWAY TO 5TH FLOOR LOOKING TOWARDS SERVICE ELEVATOR



5TH FLOOR 441 KIM
TAKEN FROM THE 7th FLOOR FROM HONOLULU STREET
TOWARDS WINDOWS WHERE SHOTS WERE FIRED.
FROM FRONT OF ROOM.



848 PLOOF 411 21A
TAKEN AS IT IS FROM FRONT OF BLOF.
IN THE 4TH AISLE FROM HOUSTON STREET



8th FLOOR 411 ELM
TAKEN FROM THE 5th AISLE FROM HOUSTON STREET
TOWARD FRONT OF BLDG. 60 FEET NORTH OF #10000
NO SIGNIFICANCE



5th FLOOR 411-114
FROM 5th ALLE FROM HOUSTON LOOKING WEST
CUR FOUND BEHIND BOXES IN CENTER OF PICTURE
STAIRWAY TO 5th FLOOR



5th FLOOR ALL THE
TAKEN FROM THE 5th AISLE FROM HOUSTON.
TOWARDS STAIRWAY LEADING TO THE 4TH FLOOR.
GIVE THOSE BUREAU BOXES IN CENTER OF PICTURE LOOKING WEST.

